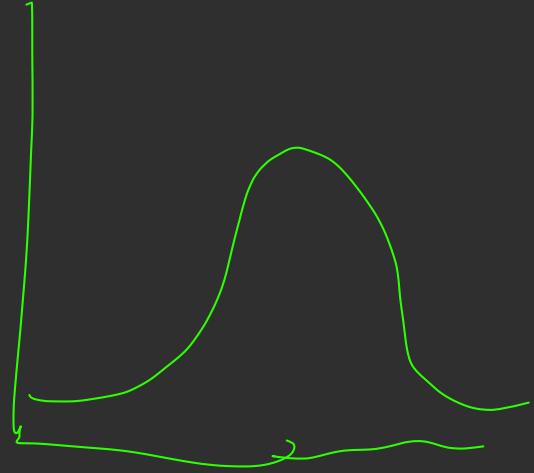




Goal: Produce timber

Clearcutting

Cut Now	Cut
Cut in 20 years	in 10 years
Cut in 30 years	Cut in 20 years



Mostly artificial
regeneration

Seed tree cut



- Natural Regeneration

... Favours

wood production

- Control of species
composition

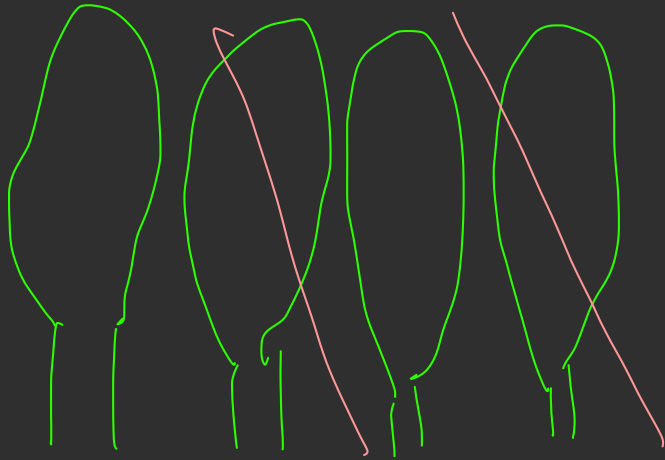
Cut Now	Cut Now
Cut in 10	Cut in 10
Cut in 20	Cut in 20
Cut Now	Cut Now
Cut in 10	Cut in 10
Cut in 20	Cut in 20

Shelterwood.

- Maximizes residual trees across the whole area.
- Protection from wind throw

Single / Group tree Selection

Uneven Structure





↑
New Mexico
R.R. logging
→ Fort
Valley → "Improve ment Lts"







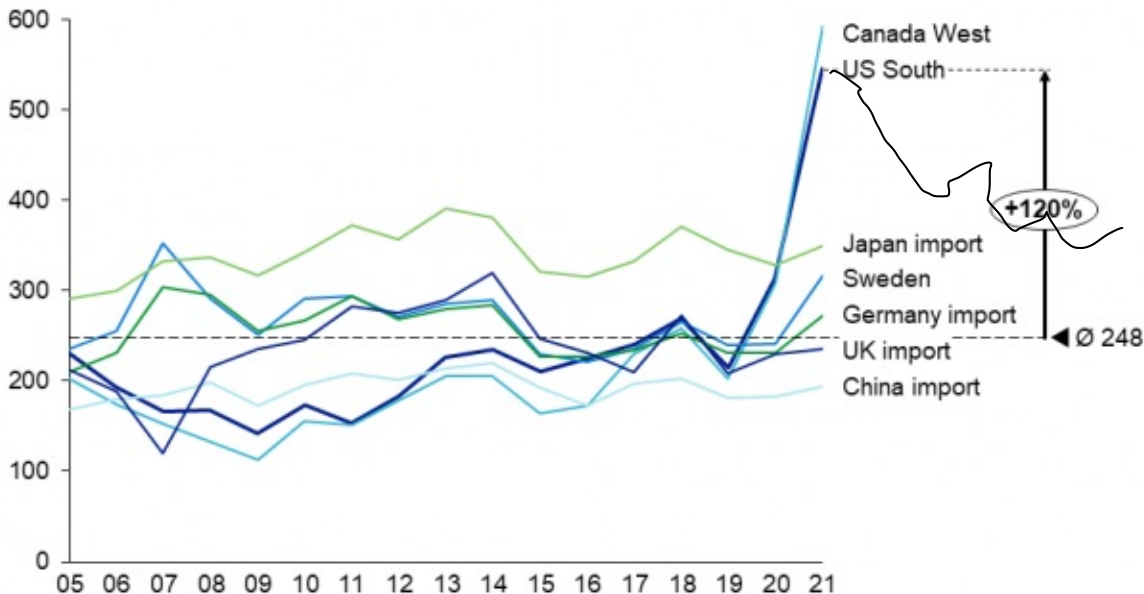






Figure 1: Global lumber prices

Softwood lumber prices in key regions; USD / m³



- Prices are currently spiking in North America, to levels 2-3x higher than average.
- Confined mainly to North America so far – but starting to be felt in Europe.
- Normally, regional movements in lumber prices are aligned, due to trade arbitrage.

SOURCE: Wood Resources International LLC



WOOD RESOURCES INTERNATIONAL O'Kelly Acumen

Forest Products

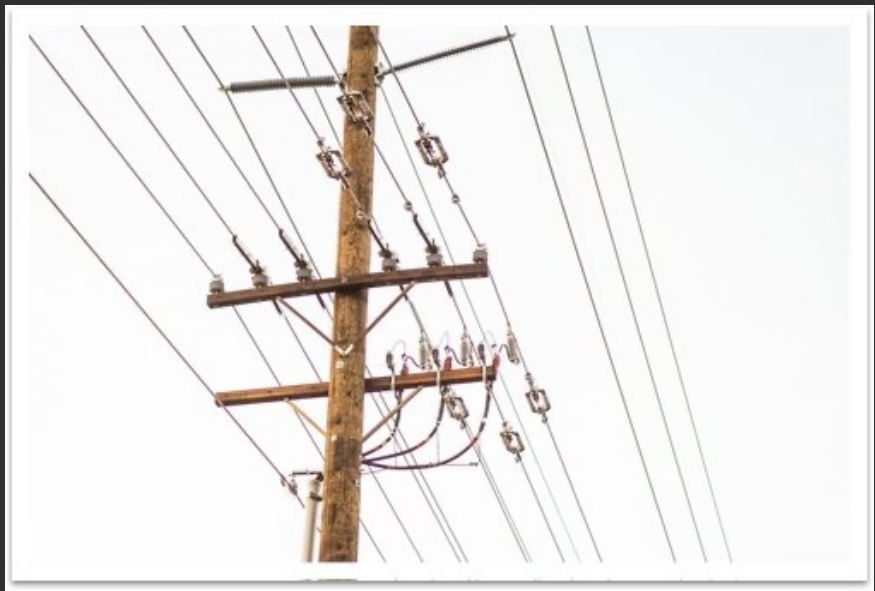
Poles! →

> 14" Diameter

and at least

30 feet of

straight wood.



Trees $\geq 16\%$

Strip of high quality heart wood or veneer from rot free trees

Saw Logs

$\geq 12'$ - $14'$ diameter

bigger logs =
more \$\$

must be 16'

of straight
wood with
few imperfections



By products
get turned into
POL





Wood chips
↓
4"-10"
4-7" < 1/2"

POC 6-12
Products other than
logs

Pulp wood
↓
Paper
↓
Particle
Board
Cork board

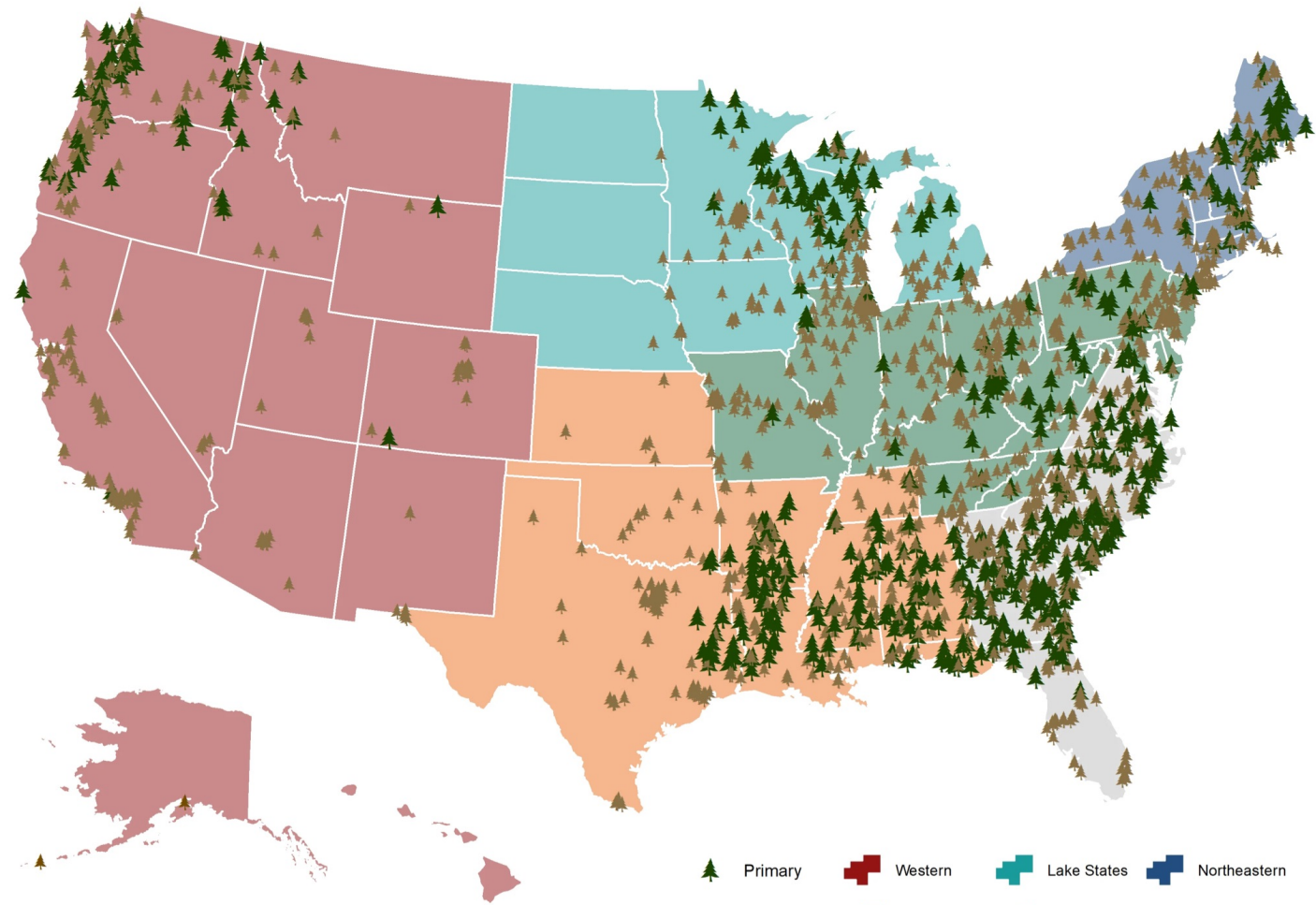


→ Landscapping

→ White fuel
+
biochar

→ Biomass utilization
to produce electricity



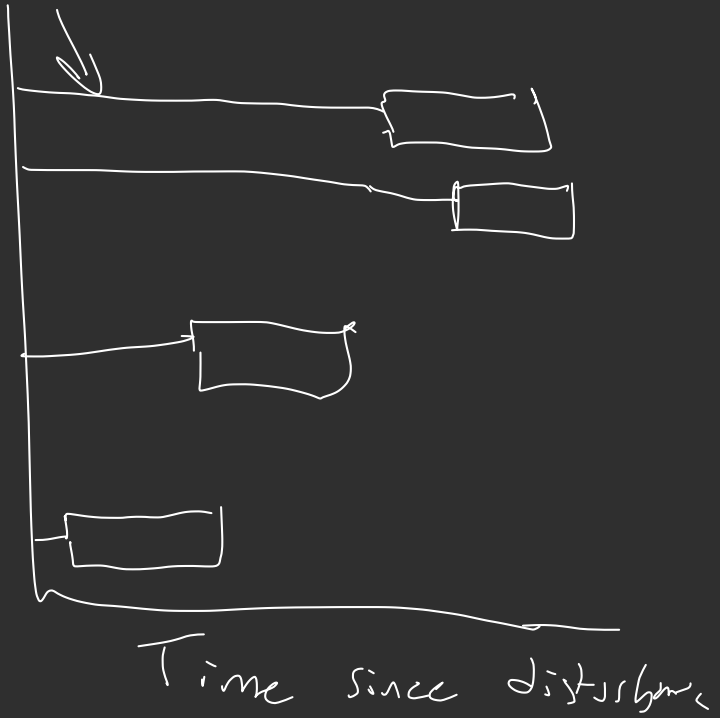








Initial Floristics



Relay floristics

